

Wuxi Taihu Lake Jinxiu Garden Residential Master Plan

This up-scale community is located near the Linghu Scenic spot on Taihu Lake. Surrounded by beautiful scenery and majestic views this high-end community is composed of low-rise buildings with each having easy access to the abundant water resources available. The design concept incorporates a resort feel with the residential and activity areas to create a classical community in the Taihu Lake area.



Tai'erzhuang Canal Northern Beach Landscape Design

This project is a 14 kilometer long restoration of a section of the historic Grand Canal. Combining local history, regional influences and the history of the canal culture, the overall plan is designed to present a rich environmentally conscious landscape.



Hainan Long Habitat Bay Project Conceptual Landscape Design

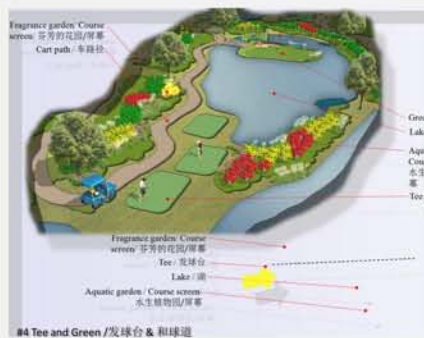
Located on the island of Hainan in the South China Sea, the Hainan Long Habitat Bay Project is uniquely situated about an hour drive from Sanya's Phoenix International airport and within easy access to many of the islands more unique and noteworthy destinations.

The Hainan Long Habitat Bay is situated to take advantage of the exciting and breathtaking vistas one finds on the south western coast of Hainan. The rugged, imposing mountains and the exquisite and inviting sand beaches offer a combination that creates a unique vacation environment.



Xianyang Weihe River Comprehensive Management Wetland Park Planting Concept

Experience a series of garden vistas that underscore the beauty of the landscape of Xi'an and highlight the distinctive nature of the golf course design

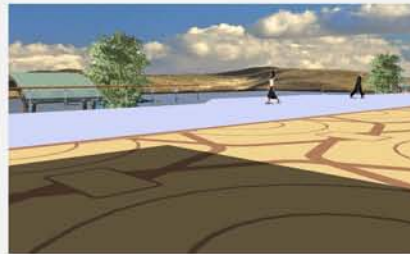


No. 9 Block of Hongqiao CBD Landscape Concept Design

The Hongqiao business district is located west of Shanghai adjacent to the Hongqiao transportation zone, comprising the Hongqiao International Airport and Shanghai Hongqiao Railway Station.

The district covers an area of 26.3 sq. kilometers and is the new focus of Shanghai's 21st century modern service industry.

The project is the focal point of the district's international trade center and a gathering place for the domestic and international corporate headquarters and trade institutions.



- | | |
|--------------------------------------|------------------------------------|
| 1. View platform 观景平台 | 7. Landscape river 景观河流 |
| 2. Interactive plaza fountain 旱地喷泉广场 | 8. Cascading water fountain 阶梯跌水喷泉 |
| 3. Bicycle parking 自行车停车位 | 9. Plaza entry fountain 街心喷泉 |
| 4. Community garden 交流花园 | 10. Feature paving 特色铺装 |
| 5. Entertainment plaza 娱乐广场 | 11. Planter/Bench 树箱座椅 |
| 6. View platform 观景平台 | 12. View platform 观景平台 |

Pingdingshan Regional Park Conceptual Landscape Design



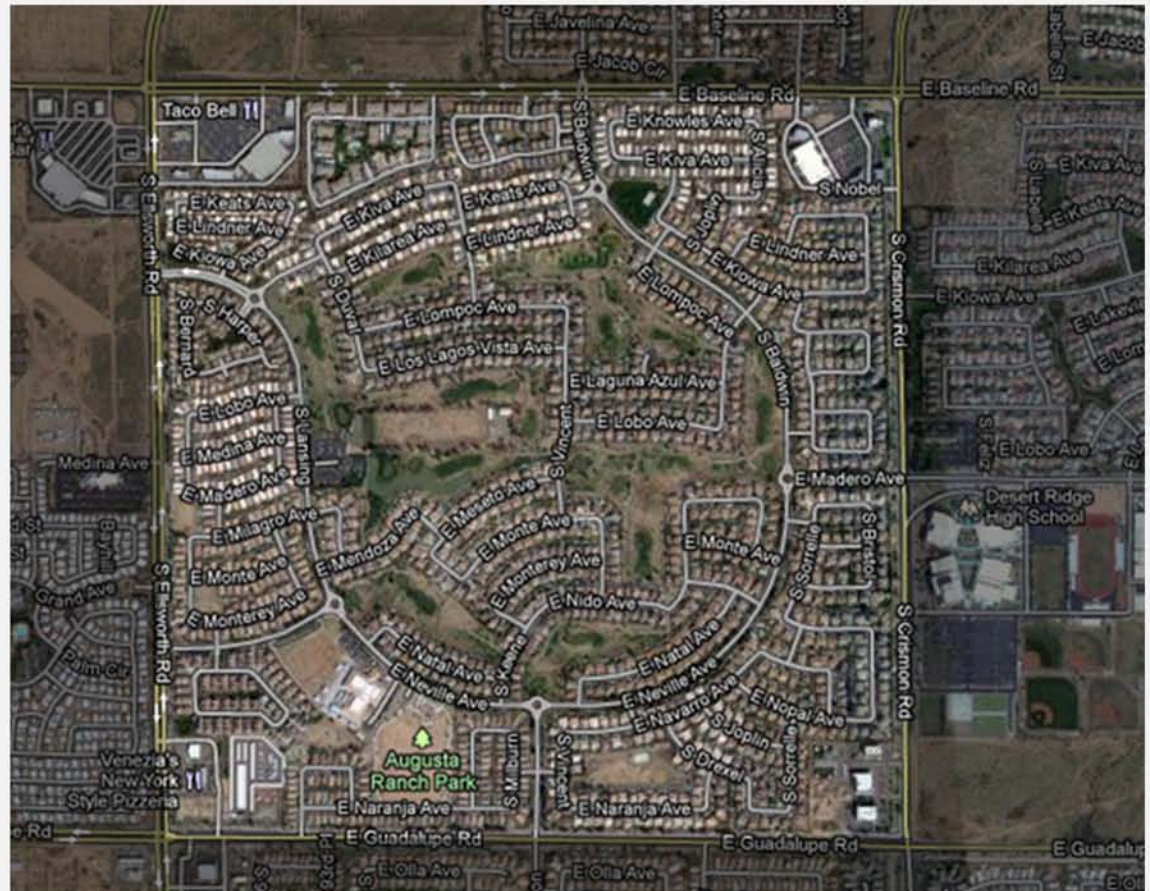
- 1 Fountain / Water fall
- 2 Deck
- 3 Lake
- 4 Tennis court
- 5 Bridge
- 6 Children's play area
- 7 Exercise trail
- 8 Entry plaza
- 9 Basketball court
- 10 Multi-use trail
- 11 Pavilion (typ)
- 12 Bench (typ)
- 13 Adult exercise area
- 14 Clubhouse



Augusta Ranch Master Planned Community

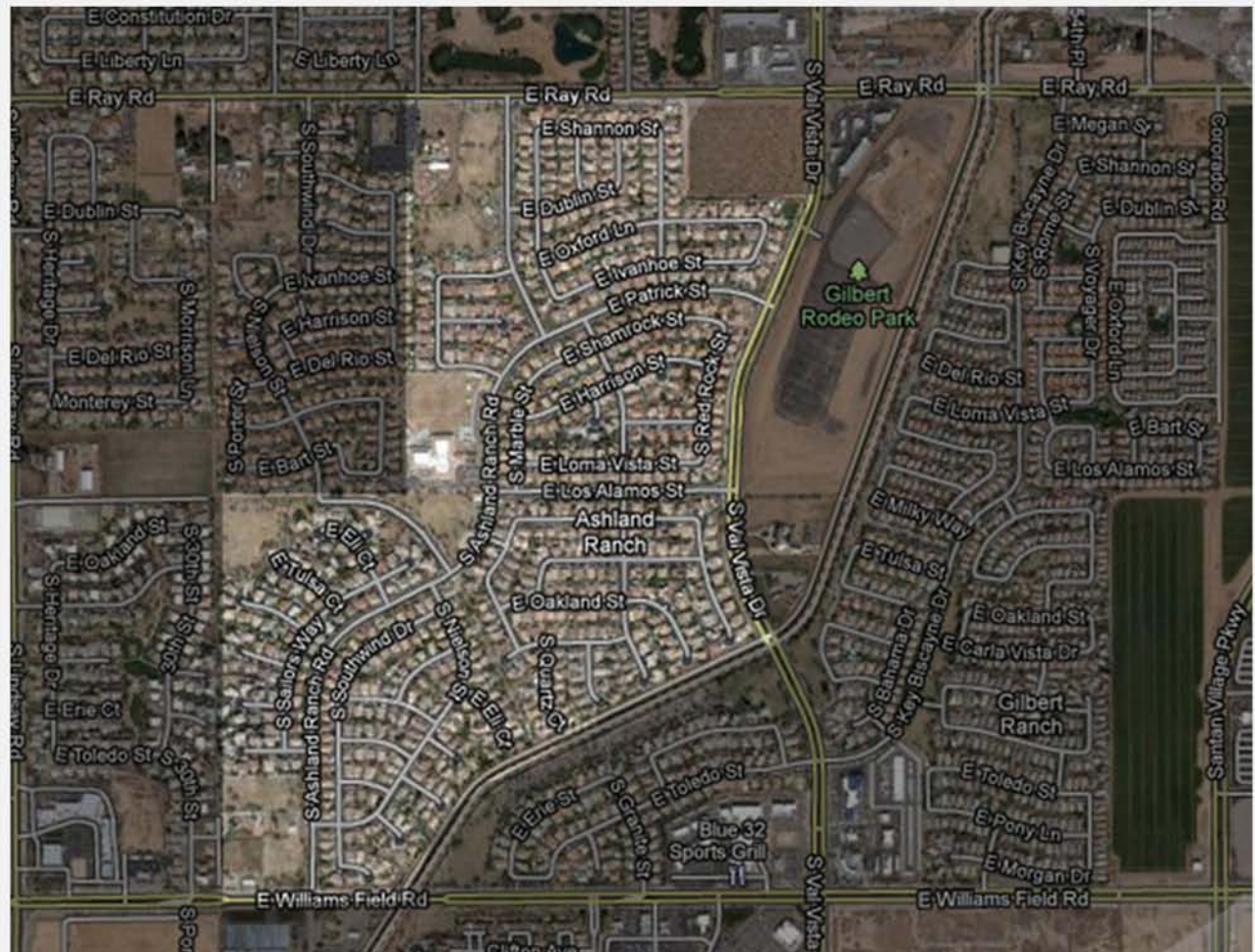
Augusta Ranch is the East Valley's premier golf club community. It is framed by Baseline Rd on the North, Guadalupe Rd on the South, Crismon Rd on the East, and Ellsworth Dr on the West. US60 and Loop 202 access is within 2 miles of the community, making it quick and easy to get to any part of the valley or escape to the mountains of eastern Arizona.

Augusta Ranch is in a great location for enjoying the many outdoor activities Arizona has to offer. Augusta Ranch is in close proximity to the Superstition Mountain Wilderness and Tonto National Forest. The Tonto National Forest border is only 9 mi away from the community. Great hiking and sightseeing opportunities await in this rugged terrain. Within 45 minutes, you can hike Peralta Trail. For all of your hard work you are rewarded with the view shown at left when you reach the top of the canyon!! Many other trails exist throughout



Ashland Ranch Master Planned Community

Located in Central Gilbert Arizona, Ashland Ranch is a beautiful family oriented community. This enchanting community features a number of contemporary and ranch style homes surrounded by lush landscapes and tree lined streets. Add to that the private parks and scenic walking trails which adorn this neighborhood and this delightful development is sure to impress. As one of Gilbert's premier communities, Ashland Ranch is truly an amazing place to call home.



Las Sendas Master Planned Community

Envision a 2500-acre community with approximately 36% of the community in natural or man made open space nestled against the boundary of the Tonto National Forest with miles of footpaths, hiking trails and bike paths. That's Las Sendas, "the paths," with its abundance of desert wildlife, quail, cactus wren, lush vegetation and century-old saguaros. View the ever changing textures and colors of the earth and sky as seasons pass in this beautiful Sonoran Desert foothills location. Celebrating the Community of Nature and Man has been, and will continue to be, the vision guiding the master development of Las Sendas. From the selection of the community name to the creation of its land plan, everything about the award-winning Las Sendas community is inviting and unique as it's been named one of the top five communities in the United States three years in a row by the National Association of Home Builders Sales and Marketing Council

The entire community is integrated by miles of natural desert and hard surface pathways for walking, biking or rollerblading as well as leading you to the recreational and school areas within Las Sendas. Some of the natural desert trails lead you to intimate settings where you may encounter a life-sized statue of an individual who has made an impact on the world - or you could even take a trail to the Tonto National Forest which, is Las Sendas' northern boundary



Trailhead Members Clubhouse

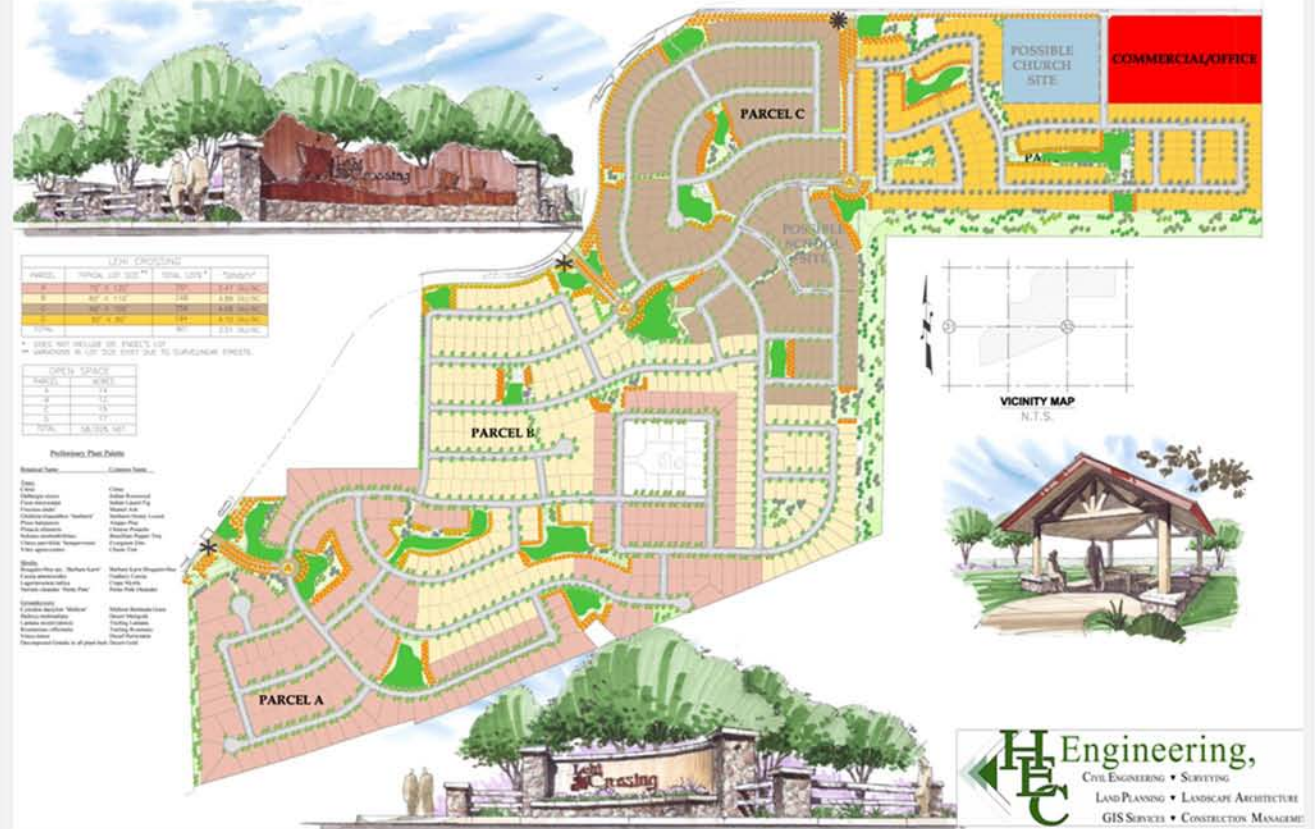
An exclusive 12,000-square-foot multi-purpose facility featuring upscale craftsman architectural styling with an abundance of exposed wood trusses and stone. Complete with its state-of-the-art Trailhead Athletic Club & Spa, pool/racquet facility, banquet and conference rooms located high in the foothills, it provides a very dramatic and scenic location for those special indoor and outdoor social and community events.

Massage therapy, personalized fitness training, nutrition guidance, yoga, aerobics — just a few of the healthy lifestyle options available at the Trailhead Athletic Club. Everything from tennis and swim leagues to golf outings, youth and adult programs and other community social activities. Special once in a lifetime or annual gatherings will find the perfect setting within the breathtaking indoor and outdoor banquet facilities. Panoramic views of the city lights and Red Mountain await you at the up-scale pool and racquet facility.



Lehi Crossing Master Planned Community

Who says you can't have everything? At Lehi Crossing you will discover the perfect balance between a secluded place to call home and convenient access to everything the Metropolitan Phoenix area has to offer. Located just west of Val Vista on Thomas Rd., Lehi Crossing offers one and two-story homes ranging from approximately 1,300 to 4,000 sq. ft.



Rancho Bella Vista South Master Planned Community

Rancho Bella Vista South is located on Gantzel Road and Bella Vista Road in San Tan Valley, Arizona. Enjoy the close proximity to some of the Valley's best amenities.

Today's home buyer is looking for more than just a home. At Rancho Bella Vista South, we know that residents are looking for a lifestyle and community. That is why Rancho Bella Vista South has been master planned to include a variety of community and lifestyle amenities.

Whether you are a leisurely stroller or a dedicated runner, the meandering walking paths found throughout Rancho Bella Vista South are easily accessible for everyone to enjoy and experience the beauty of this master planned community. The community's network of walking paths and trails connect residents to parks, which feature many amenities and usable space for resident and community use.

Shaded ramadas host picnic tables and barbeque grills for small or large events. Tot lots are a great place for the kids to play. Nestled beneath shade trees, benches line the perimeter of the playgrounds, providing a great place to supervise children at play. Little ones will enjoy hours of play on one of our tot lots, scattered throughout the Rancho Bella Vista South community. The parks' expanses of grassy, open areas are great for playing catch or soccer. Whether you are having a picnic, enjoying a walk or playing frisbee, the parks are a great place for neighbors to get together and enjoy our pleasant Arizona weather in a great community.

